

**BESTEK ELECTRONICS CORP.**

**SINCE 1980**



# About Us

## About Us

Man lives on Mother Nature and therefore finds it a sacred duty to efficiently develop and manage resources on earth.

The Bestek Electronics Corp. (referred to as the Bestek) has upheld this ideal since its inception in Taiwan in 1980. Under his leadership, Mr. Roger C. Huang, the founder of the Bestek, has led a strong technical team to build their reputation in the pedometer industry since 1982.

The Bestek has been the unique and strongest supplier in the industry for years. The main market comprises the US, EU, Sweden, Australia, Korea, Japan and Canada. Many of well-known importers and distributors in the world such as A&A (RadioShack), A&D, EKHO, PRW, TIMEX, Sportline, Panasonic, SEIKO, DRETEC, Speedo, Reebok, AussieFit, Pepsi, Boots, Anteg, K&R, Polygon, have been their important business partners. In 1980's, the Bestek was proud of selling Time Magazine with over 3,500,000pcs of phone set with digital clock in a year and half that was an historical record in the industry.

The Bestek has been granted with the certificate of ISO9001 and ISO14001 in 1999 and 2001 respectively to ensure products quality control that meet the international standard.

Developing a global oriented business has been one of the Bestek long term objectives in the industry. With 30 years experiences and his strong technical group in designing and manufacturing pedometer and consumer electronics products, the Bestek will spare no efforts to plan, develop and manufacture the best and reliable quality of products that comply with his corporate goal of integrating environmental and green concern of earth.

# Company Profile

## COMPANY PROFILE

COMPANY NAME : BESTEK ELECTRONICS CORP.  
BUSINESS TYPE : MANUFACTURER and EXPORTER  
ADDRESS : 2F, NO. 8, ALLEY 2, SZU WEI LANE, CHUNG CHENG RD., HSINTIEN CITY, TAIPEI HSIEN, TAIWAN  
TELEPHONE NO. : 886-2-2218-5239  
FAX NO. : 886-2-2218-5648  
E-MAIL : bestek@ms14.hinet.net / joseph@bestek.com.tw  
WEB SITE : www.bestek.com.tw  
MAIN BANK : CHANG HWA COMMERCIAL BANK LTD.  
ESTABLISHMENT : SINCE 1980  
PRESIDENT : MR. ROGER HUANG  
GENERAL MANAGER : DR. JOSEPH CHIU  
EMPLOYEES : 30  
ANNUAL TURNOVER : US\$8,000,000.00~10,000,000.00  
CAPITAL : US\$1,000,000.00(APPROX.)  
MAIN PRODUCTS : PEDOMETERS, PULSE METERS, SPORTS MONITORS, and HEALTH RELATED PRODUCTS.  
OEM PRODUCTS : ELECTRONICS MEASUREING INSTRUMENTS, ELECTRONICS CONTROL DEVICES, HIGHT VOLTAGE POWER UNITS, & WEATHER STATION, ETC.  
MAIN MARKET : CANADA, THE US, EU, SWEDEN, AUSTRALIA, KOREA and JAPAN  
BUSINESS PARTNERS : A&A (RadioShack), A&D, EKHO, PRW, TIMEX, Sportline, Panasonic, SEIKO, DRETEC, Speedo, Reebok, AussieFit, Pepsi, Boots, Anteg, K&R, and Polygon  
CERTIFICATE : CE, ISO 9001:2008, ISO 14001:2004

# Products

## ITEM NO. : H-215D Advance Downloadable Pedometer



### Size :

(L)59.7\*(W)38.4\*(T)29.7 cm (including the back clip)

### Packing:

Each in giftbox, 100pcs/Ctn

G.W.:12.0kgs, M.M.:1.75cft.

### Features:

- G Sensor technology : With this hi-tech sensing system, no any direction and angle limited, you can carry the device wherever you want and enjoying the accurate counting
- The device has a "damper" which will filter out inefficient movement
- USB : for uploading the stored data to computer (for Microsoft system)
- Clock : 12/24-hour format
- Step Counter : counts step taken up to 999999
- Distance Counter : counts distance covered up to 9999.99 KM/MILE
- Calorie Counter : counts calorie burned up to 99999.9 KCAL
- Average Speed : calculating the walk speed from 0.00~999 KM/h or M/h
- 7-days memo : Automatically store your walking/jogging steps. At 12 midnight & keep the last 7 day's records + a 7days' total in device
- LCD automatically powers-off when no input is sensed within one minute to save battery life
- Battery low indicator
- Power Source: 1pc CR-2032 Lithium Battery (included)

## Model No.: H-215G G Sensor Pedometer



### Size :

(L)59.7\*(W)38.4\*(T)29.7 cm (including the back clip)

### Packing:

Each in giftbox, 100pcs/Ctn

G.W.:10.5kgs, M.M.:1.75cft.

### Features:

- G Sensor technology : With this hi-tech sensing system, no any direction and angle limited, you can carry the device wherever you want and enjoying the accurate counting
- The device has a "damper" which will filter out inefficient movement
- Clock : 12/24-hour format
- Step Counter : counts step taken up to 999999
- Distance Counter : counts distance covered up to 9999.99 KM/MILE
- Calorie Counter : counts calorie burned up to 99999.9 KCAL
- Average Speed : calculating the walk speed from 0.00~999 KM/h or M/h
- 7-days memo : Automatically store your walking/jogging steps. At 12 midnighe & keep the last 7 day's records + a 7days' total in device
- LCD automatically powers-off when no input is sensed within one minute to save battery life
- Battery low indicator
- Power Source: 1pc CR-2032 Lithium Battery (included)



## ITEM NO : JW-005S Step Counter



### Size:

(L) 4.7 \* (W) 4.1 \* (t) 2.3 cm

### Packing:

each in window box, 100pcs/Ctn,

G.W.: 6.0kgs, M.M.: 1.50cft.

### Features:

- Counts STEPS ONLY to 99,999 steps
- Simple operation, one RESET button only
- Compact Design.
- Solid and lightweight. Great for all-day wear
- The best pedometer for walking programs
- Free battery (LR-44 x 1pc)

## ITEM NO : JW-005C 3-Function Pedometer



### Size:

(L) 4.7 \* (W) 4.1 \* (t) 2.3 cm

### Packing:

Each in window box, 100pcs/Ctn,

G.W.: 6.0kgs, M.M.: 1.50cft.

### Features :

- Measures walking/jogging steps up to 99999
- Measures walking/jogging distance up to 999.99 mile/km (with individual stride adjustment)
- Km or Mile reading distance is selectable
- Measures exercise calorie burned up to 99999 kcal (with individual weight adjustment)
- Compact Design.
- Solid and lightweight. Great for all-day wear
- The best pedometer for walking programs
- Free battery (LR-44 x 1pc)

## ITEM NO : JW-009C 3-Function Pedometer



### Size:

(L) 4.0 \* (W) 5.3 \* (t) 2.1 cm

### Packing:

Each in window box, 100pcs/Ctn,

G.W.: 7.0kgs, M.M.: 1.63cft.

### Features :

- Measures walking/jogging steps up to 99999
- Measures walking/jogging distance up to 999.99 mile/km (with individual stride adjustment)
- Km or Mile reading distance is selectable
- Measures exercise calorie burned up to 99999 kcal (with individual weight adjustment)
- Compact Design.
- Solid and lightweight. Great for all-day wear
- The best pedometer for walking programs
- Free battery (LR-44 x 1pc)

## ITEM NO : JW-012C 4-Function Pedometer



### Size:

(L) 5.40 \* (W) 4.15 \* (t) 2.70 cm

### Packing:

Each in window box, 100pcs/Ctn,  
G.W.: 7.0kgs, M.M.: 1.50cft.

### Features :

- Measures walking/jogging steps up to 99999
- Measures walking/jogging distance up to 999.99 km (with individual stride adjustment)
- Measures exercise calorie burned up to 999.99 kcal (with individual weight adjustment)
- 10-hour count up Stopwatch (in the first 10-minute, can read 1/100second)
- Compact clamshell design
- Solid and lightweight. Great for all-day wear
- The best pedometer for walking programs
- Free battery (LR-44 x 1pc)

## ITEM NO : JW-017P 7-Function Pulse Pedometer



### Size:

(L) 6.5 \* (W) 5.5 \* (t) 3.6 cm

### Packing:

Each in window box, 100pcs/Ctn,

G.W.: 10 kgs, M.M.: 2.2 cft.

### Features :

- 12/24-hour format clock
- Measures walking/jogging steps from 0-99999.
- Measures walking/jogging distance up to 999.99 km.(with individual stride adjustment)
- Measures exercise calorie burned up to 99999 kcal.(with individual weight adjustment)
- Fingertip touch sensing Pulse detecting.
- 24 hours count-up Stopwatch measures exercise time.
- 24 hours countdown Timer.
- Power Source: 1pc CR-2032 Lithium Battery (included)

## ITEM NO : JW-020P 5-Function Pulse Pedometer



### Size:

(L) 6.18 \* (W) 4.00 \* (t) 3.05 cm

### Packing:

Each in window box, 100pcs/Ctn,

G.W.: 8.5kgs, M.M.: 2.2cft.

### Features :

- Measures walking/jogging steps from 0-99999.
- Measures walking/jogging distance from 0-999.99 km.(with individual stride adjustment)
- Measures walking/jogging calorie burned from 0-99999 kcal.(with individual weight adjustment)
- 12/24-hour format clock
- Fingertip touch sensing Pulse detecting.
- Power Source: 1pc CR-2032 Lithium Battery (included)

## ITEM NO : JW-166P 5-Function Pulse Pedometer



### Size:

(L) 6.18 \* (W) 4.00 \* (T) 3.05 cm

### Packing:

Each in window box, 100pcs/Ctn,  
G.W.: 8.5kgs, M.M.: 1.75cft.

### Features :

- Measures walking/jogging steps from 0-99999.
- Measures walking/jogging distance from 0-999.99 km.(with individual stride adjustment)
- Measures walking/jogging calorie burned from 0-99999 kcal.(with individual weight adjustment)
- 12/24-hour format clock
- Fingertip touch sensing Pulse detecting.
- Power Source: 1pc CR-2032 Lithium Battery (included)

## ITEM NO : JW-166UV 8-Function UV Pedometer



### Size:

(L) 6.18 \* (W) 4.00 \* (T) 3.05 cm

### Packing:

Each in window box, 100pcs/Ctn

G.W.: 8.5kgs, M.M.: 1.75cft.

### Features:

- Measures walking/jogging steps from 0-99999.
- Measures walking/jogging distance from 0-999.99 km.(with individual stride adjustment)
- Measures walking/jogging calorie burned from 0-99999 kcal.(with individual weight adjustment)
- 12/24-hour format clock
- UVI
- SPF
- SUN EXP.
- Thermometer
- Power Source: 1pc CR-2032 Lithium Battery (included)



## ITEM NO : H-208C 3-Function Pedometer



### Size:

(L) 4.8 \* (W) 3.51 \* (t) 2.0 cm

### Packing:

Each in window box, 100pcs/Ctn

G.W.: 6.0kgs, M.M.: 1.50cft.

### Features:

- Measures walking/jogging steps up to 99999
- Measures walking/jogging distance up to 999.99 mile/km (with individual stride adjustment)
- Km or Mile reading distance is selectable
- Measures exercise calorie burned up to 99999 kcal (with individual weight adjustment)
- Compact Design.
- Solid and lightweight. Great for all-day wear
- The best pedometer for walking programs
- Free battery (LR-1130 x 1pc)

## ITEM NO : H-215 4-Function Pedometer



### Size:

(L) 5.6 \* (W) 3.7 \* (t) 2.7 cm

### Packing:

Each in window box, 100pcs/Ctn

G.W.: 6.0kgs, M.M.: 1.50cft.

### Features:

- 12/24-hour format clock
- Measures walking/jogging steps up to 99999
- Measures walking/jogging distance up to 999.99 mile/km (with individual stride adjustment)
- Measures exercise calorie burned up to 99999 kcal (with individual weight adjustment)
- Compact Design.
- Solid and lightweight. Great for all-day wear
- The best pedometer for walking programs
- Free battery (LR-1130 x 1pc)

## ITEM NO : BM-308 Mini Counter



### Size:

(L) 2.4 \* (W) 1.6 \* (t) 0.53 cm

### Packing:

60pcs / PE tray, 5040pcs/Ctn,  
G.W.: 16.0kgs, M.M.: 1.60cft.

### Features :

- Measures walking/jogging Steps up to 99,999
- Power Source: 1.5V SR-626 \* 1pc. (included)

## ITEM NO : JW-101 Pet Pedometer



### Size:

(L) 5.0 \* (W) 3.0 \* (t) 1.2 cm

### Packing:

Each in blister card, 100pcs/Ctn,

G.W.: 4.5kgs, M.M.: 0.80cft.

### Features:

- Large easy-to-read LCD display
- Measures Pet's walking steps up to 99999.
- Auto-flashing filtration avoid abnormal (non-step) movement for more accurate counting.
- Takes effective pet's exercise time from 00:00 (min:sec) ~ 99:59 (Hour:min.)
- Slim, light-weight for easy carrying.
- Free battery (LR-1130 x 1pc)

## ITEM NO : BP-21 Pulse Watch



### Size:

(L) 25.51 \* (W) 4.2 \* (t) 1.3 cm

### Packing:

Each in window, 100pcs/Ctn

G.W.: 10kgs, M.M.: 1.80cft.

### Features :

- 12/24-hour format clock
- 100-minutes Stopwatch
- 8-Preset Timer: 3min. 4min. 5min. 10min. 15min. 30min. 60min. 90min.
- Fingertip touch sensing Pulse detecting.(No Chest Strap required)
- Power Source: 1pc CR-2032 Lithium Battery (included)
- Watch Band: PU, available in black only.

## ITEM NO : BP-73 Pulsemeter



### Size:

(L) 7.7 \* (W) 5.3 \* (t) 1.5 cm

### Packing:

Each in window box, 100pcs/Ctn,  
G.W.: 7.5kgs, M.M.: 1.63cft.

### Features :

- 12/24-hour format clock
- 100-minutes Stopwatch
- Fingertip touch sensing Pulse detecting.
- Power Source: 1pc CR-2032 Lithium Battery (included)

## ITEM NO : BP-32M Pulse Card



### Size:

(L) 7.7 \* (W) 5.3 \* (t) 1.5 cm

### Packing:

Each in white box, 300pcs/Ctn,  
G.W.: 14kgs, M.M.: 2.18cft.

### Features :

- 12/24-hour format clock
- 100-minutes Stopwatch (99min 59sec.)
- 8-Preset Timer: 5min. 10min. 15min. 20min. 30min. 40min. 60min. 90min.
- Fingertip touch sensing Pulse detecting. (No Chest Strap required)
- 8 memo.
- Power Source: 1pc CR-2032 Lithium Battery (included)

## ITEM NO : BS-2100 Skin Analyzer



### Size:

(L) 13.42 \* (W) 3.79 \* (T) 2.65 cm

### Packing:

Each in gift box, 100pcs/Ctn,

G.W.: 11kgs, M.M.: 3.2cft.

### Features :

- 12/24-hour format clock
- 24-hour Clock Alarm
- Detecting the moisture, oil, & softness of face skin depends on the latest Bioelectric Impedance Analysis (BIA) Technology.
- Compact and unique design for easy operation.
- Easy- read LCD pattern.
- Power Source: 1pc CR-2032 Lithium Battery (included)



# Certificate









**SGS Taiwan Ltd.  
EMC Services**

134, Wu Kung Road,  
WuKu Industrial Zone,  
Taipel County, Taiwan 248  
Tel: +886-2-2299-3279  
Fax: +886-2-2295-2698

Certificate No.: EM/2005/90052

**CERTIFICATE OF EMC COMPLIANCE**

Model No : JW-166P  
Series No : BP-021; BP-023; BP-072; BP-072NS; BP-073; JW-017P; JW-020P  
Product Name : MULTI-FUNCTION PULSE PEDOMETER (MULTI-FUNCTION PULSE  
PEDOMETER, PULSEMETER)  
Applicant : BESTEK ELECTRONICS CORP.  
Address of Applicant : 2<sup>ND</sup> FL, NO.8 ALLEY 2, SZU WEI LANE, CHUNG CHENG RD, HSINTIEN CITY, TAIPEI  
HSIEN, TAIWAN, R.O.C.

Based on SGS EMC Test Report Number(s) : EM/2005/90052

Date of Receipt : 15 Sept. 2005  
Date of Test(s) : 15 Sept. ~ 11 Oct. 2005  
Date of Issue : 11 Oct. 2005

Test(s) Required :  
EN 61326 : 1997+A1:1998+A2:2001+A3:2003  
EMI: EN 55011 : 1998+A1:1999+A2:2002 Class B  
EMS: IEC 61000-4-2 : 1995+A1:1998+A2:2001 IEC 61000-4-3 : 2002.

Conclusion

The apparatus meets the requirements of the above standards and hence fulfills the requirements of EMC Directive 89/336/EEC as amended by Directives 92/31/EEC and 93/68/EEC within CE marking requirement.

\*This certificate is only valid for the equipment and configuration described, and in conjunction with the test report as detailed above.



Authorized Signatory:

SGS TAIWAN LTD.  
Victor Wen

Copyright of this certificate is owned by SGS Taiwan EMC Services and may not be reproduced other than in full and with the prior approval of the Manager of SGS Taiwan EMC Services.

Member of SGS Group (Societe Generale de Surveillance)



# Certificate of Registration



This is to certify that the  
Quality Management System of:

## Bestek Electronics Corp.

2nd Floor, No. 8, Alley 2, Szu Wei Lane, Chung Cheng Road,  
Hsintien District,  
New Taipei City,  
Taiwan, R.O.C.

has been assessed and found compliant with the requirements of

## ISO 9001:2008

Approval is hereby granted for registration providing the  
certification rules and conditions are observed at all times.

### Certification Scope:

**Design, Assembly and Sale of Small Electronic Products and Medical Devices**

Certificate No. 11004



Original Issue Date: 22nd February 2006

Recertification Date: 2nd April 2011

Expiry Date: 1st April 2014

*Iden Wang*

Authorised Signature

**Moody International Certification Ltd.**

[www.moodyint.com](http://www.moodyint.com)



014

The use of the Accreditation Mark indicates accreditation in respect of those activities covered by the Accreditation Certificate 014.  
The certificate remains the property of Moody International Certification Limited to whom it must be returned on request.



# Certificate of Registration



This is to certify that the  
Environmental Management System of:

**Bestek Electronics Corp.**

2nd Floor, No. 8, Alley 2, Szu Wei Lane, Chung Cheng Road,  
Hsintien District,  
New Taipei City,  
Taiwan, R.O.C.

has been assessed and found compliant with the requirements of

**ISO 14001:2004**

Approval is hereby granted for registration providing the  
certification rules and conditions are observed at all times.

## Certification Scope:

**Design, Assembly and Sale of Small Electronic Products and Medical Devices**

Certificate No. 11004



Original Issue Date: 7th June 2002

Recertification Date: 2nd April 2011

Expiry Date: 1st April 2014

*Iden Wang*

Authorised Signature

**Moody International Certification Ltd.**

[www.moodyint.com](http://www.moodyint.com)



014

The use of the Accreditation Mark indicates accreditation in respect of those activities covered by the Accreditation Certificate 014.  
The certificate remains the property of Moody International Certification Limited to whom it must be returned on request.

# Bestek Electronics Corporation

## Quality Plan for pedometer

### Purpose:

We perform the quality inspection at different steps to upgrade the product quality; furthermore, the quality of inspecting product can comply with the client's request.

### A. Quality inspection

#### (1) incoming quality control(IQC)

we perform the sampling inspection for materials, part and semi-finished products according to the working instruction of incoming process, the sampling plan is based on MIL-STD-105E.

a. we follow AQL level(acceptable quality level) depend on different material, it illustrated as following:

(a)electronics:0.65%

(b)hardware:2.5%

(c)plastic:2.5%

(d)packing:4.0%

b. inspection item

#### (a) PCB:

(I)specification(II) part surface printing(III)drill hole(IV) soldering(V) bonding(VI) circuit shorted

#### (b) Electronics parts:

(I) specification(II) C/L/R test or relevant electricity character test III)polarity

#### (c) IC circuit:

(I) specification (II)functional inspection (III)visual inspection

#### (d) LCD:

(I)specification(II) testing for consumption of current (III)visual inspection

#### (e) Sensor

(I) specification(II) shape(III)sensitivity test

#### (f) Wire

(I) specification (II)visual inspection(III)length(IV)wire radius

#### (g) Rubber key

(I) specification(II) color (III)shape (IV)resistor value

#### (h) Zebra strip

(I)specification(II) shape

#### (i) Plastic/Hardware/Packing

(I)specification(II) shape

(2) QC members perform the first item inspection in the manufacturing products for every lot and every change line and keep a diary inspection for the item which illustrated as following:

(a) functional inspection : the key of mode/reset/set for steps/distance /calorie/time

(b) visual inspection: upper/middle/lower case, panel, nameplate, LCD, key,clip.

(3) 100% inspection in the process(IPQC) according to working instruction.

(a) we do the accuracy test by vibration machine when the assembly is completed, for example, the testing accuracy level for the products H-215 are as following table.

Phase	M	Steps	Acceptable steps
Phase 1	0	1,000	980~1010
Phase 2 Surface	0	100	

(b)after passing accuracy test, we perform the final quality inspection (FQC) ,then write down the condition of inspection on the attachment 1.The inspection items are illustrated below:

(I) functional inspection : the key of mode/reset/set for steps/distance /calorie/time

(II) visual inspection: upper/middle/lower case, panel, nameplate, LCD, key, clip.

(III) mechanism: inspection for case match, clip hinge, bolt..

#### B. Outgoing inspection(quality assurance)

We perform the sampling inspection according to the sampling plan of MIL-STD-105E ,we follow AQL level(acceptable quality level) depend on major defect and minor defect item, then write down the condition of inspection on the attachment 2 , and The inspection process is according to the working instruction of H-215

AQL level:

(a) major defect item :1.0%

(b) minor defect item:2.5%

The inspection items:

(a) accuracy test: the same as IPQC testing method table.

(b) functional inspection : the key of mode/reset/set for steps/distance /calorie/time

(c) visual inspection: upper/middle/lower case, panel, nameplate, LCD, key, clip.

(d) mechanism: inspection for case match, clip hinge, bolt..

(e) packing: inspection for gift box, window box, instruction, sticker, blister,  
transparent cover, carton mark

C. Quality inspection flow chart

The flow chart for quality inspection at different steps is illustrated as attachment 3



Attachment 2

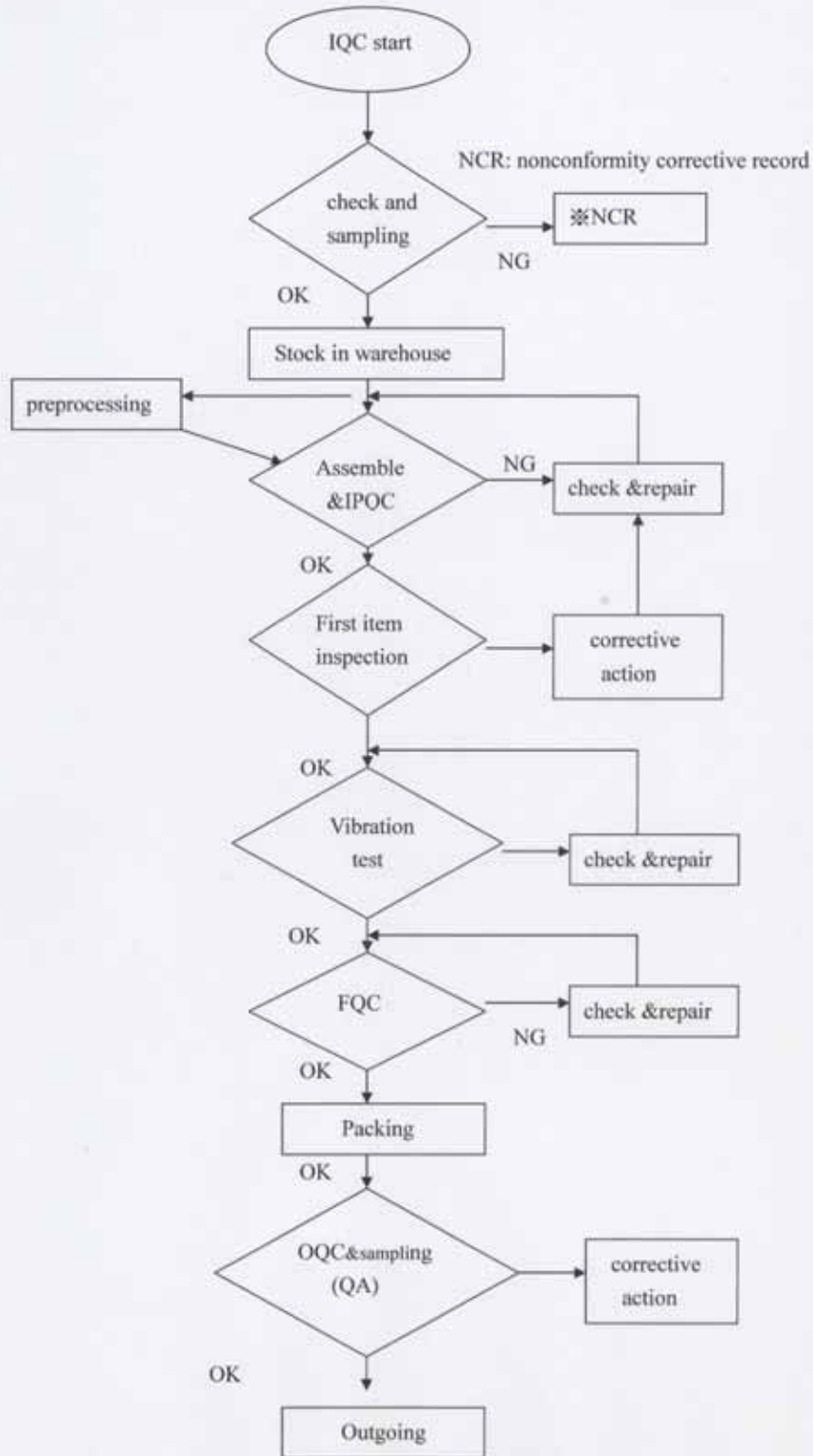
**BESTEK ELECTRONICS CORPORATION**  
**Inspection Report For Outgoing Product**

Client		lot quantity		defects number	Major: PCS Minor: PCS			
model		sampling number		Total defective rate				
AQL	Major: 1.0% AC: PCS REJ: PCS			Minor: 2.5% AC: PCS REJ: PCS				
Defects condition & causes analysis	Major				Minor			
	No	Defects item	QTY	Defects cause	No	Defects item	QTY	Defects cause
Major:		PCS	Defective rate: %	Minor:		PCS	Defective rate: %	
Function test for accuracy	no	step (1,000 steps /120rpm)	distance(KM)	Kcal	current for consumption			
		accept interval: 980-1020	accept interval: 0.68-0.71	accept interval: 40.30-42.20	accept interval: under 10 μ A			
	01							
	02							
	03							
	04							
	05							
	06							
	07							
	08							
Outgoing evaluation	<input type="checkbox"/> Accept <input type="checkbox"/> Reject							
Remark								

Director of manufacturing division  
 Approved by: Wen-Li Kua

Section leader of QC  
 Inspected by: Pei Ying Shao

Flow chart of production and quality inspection



## Vibrant Test Report

Date: March 16,2011

Venue: Bestek Electronics Corp.

Samples: 100 pcs

Model: H-215

Vibrant set: 1000 steps

Sponsor: IQC, Bestek

Result:

1. less than 990 steps: 3 pcs
2. implication: accuracy rate 97% with 1% error range
3. details see attachment



Product Code	Test data	Product Code	Test data	Product Code	Test data	Product Code	Test data
1	1,003	26	1,007	51	1,004	76	1,000
2	1,002	27	1,001	52	1,000	77	1,003
3	1,002	28	1,002	53	1,000	78	1,002
4	1,000	29	1,001	54	1,001	79	999
5	1,002	30	1,003	55	1,001	80	1,000
6	1,002	31	1,000	56	1,000	81	1,001
7	1,001	32	1,001	57	1,000	82	1,000
8	1,001	33	1,003	58	1,001	83	1,001
9	990	34	1,000	59	1,002	84	1,002
10	1,000	35	1,000	60	1,000	85	1,002
11	1,001	36	1,001	61	1,001	86	984
12	993	37	1,002	62	1,000	87	1,001
13	999	38	1,000	63	1,004	88	1,001
14	1,003	39	1,001	64	985	89	1,003
15	1,001	40	1,000	65	1,002	90	1,003
16	1,003	41	1,002	66	1,001	91	1,000
17	1,002	42	1,001	67	1,003	92	1,002
18	1,002	43	1,003	68	1,000	93	1,001
19	1,002	44	1,002	69	1,003	94	1,000
20	1,003	45	1,002	70	1,000	95	1,001
21	1,002	46	1,004	71	1,002	96	1,002
22	1,001	47	1,002	72	988	97	1,000
23	998	48	1,001	73	1,002	98	1,001
24	1,002	49	1,000	74	1,001	99	1,001
25	1,002	50	1,002	75	1,001	100	1,002